



ANNUAL JOURNAL 2015

Celebrating our
MILESTONES



THE
WHITGIFT
FOUNDATION

1



THE
WHITGIFT
FOUNDATION

Chairman's
First
year





It was a tremendous honour to be appointed Chairman to the Court of Governors and my first year in post has certainly been extremely busy! I have taken great pride in witnessing so many milestone achievements across our education and care services.

In education, our schools have once again produced outstanding public examination results with a record set of GCSE results at Whitgift, Trinity and Old Palace. Top A-Level and IB grades were attained which saw the vast majority of 2015's leavers going on to university with destinations as diverse as Oxford, Cambridge, St Andrew's, Durham, Birmingham, Imperial College and Southampton to name but a few. The schools continue to excel in all co-curricular activities from sport to the arts achieving both regional and national accolades. These achievements demonstrate the quality of the education that we provide and they are also a great tribute to the skills of our teaching staff.

In our care activities, we have major building and maintenance projects underway at all three of our facilities at Whitgift Care and we look forward to extending our services to include day care in 2016. The awards and inspection reports that the homes hold are testament to the exceptional standards of care given to our residents by our compassionate staff teams. The Carers Support Centre received a record number of enquiries totalling 25,000 in 2015, proving the facility's success in supporting Croydon's carers, after just a few years of opening.

It has been a pleasure to lead such a dedicated Court of Governors, particularly at this very important time for the Foundation and indeed Croydon as a whole. In addition to the routine business of charity governance, we have edged closer to the start of the redevelopment of the Whitgift Centre with the Secretary of State's granting of the Compulsory Purchase Order being a major milestone in 2015. We are excited about the prosperity, employment and the physical improvements that the scheme will deliver to the Borough. As the freehold owner of the Whitgift Centre, the financial benefits will enable us to maintain and develop our charitable endeavours in the years ahead, reaching and benefiting even more people in Croydon and beyond.

Christopher Houlding
Chairman to the Court of Governors



5 years of gold standard care

In 2010, Whitgift House, part of Whitgift Care, embarked on its most rigorous training programme to date, the Gold Standard's Framework (GSF). The GSF is the only accreditation programme in the UK that is dedicated to enabling generalist frontline staff to provide a gold standard of care for people nearing the end of their life. With 36 residents in full nursing care, the programme was an obvious step for the home as Philomena Kavanagh, Head of Care, says: *"It's the best you can be for your residents. Before they have even set foot in the door, they will already know that you are good."*

Aside from the statutory Care Quality Commission (CQC) inspections, the GSF is currently one of the few ways that homes can demonstrate excellent care practice. However, obtaining the GSF is voluntary to nursing homes, hospitals, hospices and GP practices and a lot of dedication and commitment is required from staff in order to achieve this highest level. When Whitgift House first embarked on the programme, it was only one of six nursing homes in Croydon to have received the award. Homes must be re-accredited every three years and so, in 2013, the team were thrilled to be awarded the highest accolade of 'Beacon Status', testament to their commitment, dedication and hard work to achieve the award.

Whitgift House was particularly recognised for its strong leadership and coordination, person centred approach to care, working with others and reducing admissions to hospital.

The home received further recognition when it was selected from thousands of homes nationally to join care providers around the country at the House of Commons on 22nd October 2015 to demonstrate excellent practice in end of life care. The aim of the event was to demonstrate to MPs that, contrary to the prevalent depictions in the media, care homes do offer exceptional standards of care to patients and this should be celebrated more widely. Following its five years of being accredited by the GSF, Whitgift House hopes to become an ambassador for the scheme and is already gearing up for re-accreditation in 2016. With every faith in her team, Philomena is already taking it in her stride: *"We've done it twice and we'll do it again!"*

With more than 100 residents living at Whitgift Care, striving for outstanding care provision is a priority that exists across all three homes where residents take centre stage in the day-to-day running of the homes. Wilhelmina House is now embarking on the Steps to Success programme facilitated by St Christopher's

Hospice and aimed to further improve end of life care in residential care homes. This follows a glowing unannounced CQC inspection report in 2015 where the home was awarded an overall rating of 'Good' and staff were commended on their skills, knowledge and experience to deliver safe and effective care. Inspectors also acknowledged the wide range of activities on offer that enable the residents to lead as full and active life as possible. Shortly after, the home's kitchen received the top Five Star Good Hygiene Award achieving all of the criteria set by the Government's Food Standards Agency. On the outcome of the CQC inspection report, Deborah Pearson, Care Manager, commented: *"At Wilhelmina House we are passionate about providing a homely, safe and caring environment for our residents and each staff member is dedicated to ongoing workplace training and skills development to ensure we achieve this. The fact that it was an unannounced inspection demonstrates our commitment to providing the highest quality of care all the time and not just for the days we know we have an official review."*



“Whitgift Care is truly unique. Firstly, through our traditions – we put our residents at the centre of the organisation and they are our ‘VIPs’. Secondly, the atmosphere within the homes. As soon as you enter any of our homes, you can feel the love, the care, the laughter – it embraces you and it’s amazing. I challenge anyone to go in and not feel it.”

—
CLLR TONI LETTS
CHAIR of the
CARE COMMITTEE

“What is fantastic about the Gold Standards Framework, is that it is focusing care homes’ staff minds on how can they make that (end of life care) experience the best it possibly can be.”

—
ANDREA SUTCLIFFE
CHIEF INSPECTOR ADULT
SOCIAL CARE, CQC



25 YEARS

2016 is a special year for Dr Christopher Barnett, as it marks 25 years of being Headmaster of Whitgift School, and impressively, the longest-serving Head with continuous service in one school, in membership of the HMC (the Headmasters' and Headmistresses' Conference), a professional Association of heads of the world's leading independent schools. Having read History at Oxford, and also completed his doctorate there, Dr Barnett started his career as a Lecturer in Economics at Brunel University. After nearly a decade as Head of History at Bradfield College, he served for four years as Second Master at Dauntsey's School, before coming to Whitgift as Headmaster in 1991.

During his 25 years at the School, Dr Barnett has shown Her Majesty the Queen around Whitgift, invited His Royal Highness The Duke of York KG to become the School's Patron and welcomed a vast number of ambassadors and distinguished guests from all walks of life in Britain, and abroad, to meet and address the boys, in his quest to enrich the education of Whitgift pupils and build beneficial links for the School. He has seen the School Roll increase dramatically, from 875 to 1,450 boys. His three sons have passed through Whitgift and gone on to successful careers, and there are currently 15 members of staff at Whitgift, including the Second Master, who were boys in the School during Dr Barnett's Headship.

*Whitgift's
number-one
phenomenon has
to be it's Head,
the energetic and
inspirational
Dr. Christopher
Barnett.*

—
**TATLER
SCHOOLS GUIDE**

*Tall, commanding.
full of initiative.
His educational
vision should
be cloned and
marketed.*

—
**GOOD SCHOOL
GUIDE**

as Headmaster of Whitgift School

From academic life to the Whitgift grounds, his eclectic passions have been instrumental in contributing to all-round school development:

Academic excellence

He has been instrumental in ensuring Whitgift offers the widest possible range of qualifications, including the International Baccalaureate, A Levels and BTEC, and he has introduced French and Spanish sections, leading to international qualifications. In 2014, the French Ambassador, His Excellency Bernard Emié, awarded him the Chevalier dans l'ordre des Palmes académiques, in honour of his services to French culture and education.

Exquisite grounds

The grounds and buildings have evolved enormously over the past two and a half decades. Dr Barnett has brought boarders to Whitgift, initially with one small boarding house, more recently with the addition of Founder's House, in 2013, bringing 108 boarders from across the UK and 20 other countries around the globe. The Sports and Conference Centre, opened in 2005, is another superb facility.

Dr Barnett's love of nature has been evident in the Whitgift grounds; he designed and introduced the Water Gardens, opened in 2005 by Sir David Attenborough, who said Whitgift was "*astonishing... an amazing school*". They are home to wallabies, flamingos and birds from every continent. The beautiful Founder's Garden was created to mark Whitgift's 400th Anniversary, complete with Tudor-style maze and a specially-commissioned Whitgift Rose, which featured in an award-winning

Whitgift Garden at the Hampton Court Flower Show in 2009. On making the top award in the 2014 London in Bloom – Sow, Grow and Know competition, the judges commented, "*Whitgift School is one of the jewels in the crown of Croydon, London and the South East.*"

Acclaimed Arts

Dr Barnett's passion for the Arts has seen a close partnership develop with the Royal Philharmonic Orchestra, the establishment of the Whitgift Chamber Orchestra, for students from state and independent schools, and the creation of the Whitgift International Music Competition (WIMC). Launched in 2013, the WIMC is a major biennial competition for young musicians from the UK and around the world. Dan-Iulian Druţac, winner of the 2013 competition, now a scholar at the Guildhall School of Music and Drama, has since said of the opportunity, "*My life took an amazing upward turn when Whitgift found me.*"

Sporting prowess

Thanks to Dr Barnett's vision; an amazing 225 national titles have been won in his time as Head. The sports offering has grown to over 1,400 sporting fixtures each year, 23 full-time staff, more than 40 available sports and activities, and partnerships with all the leading governing bodies, not to mention strong links with professional clubs, including Chelsea FC. Countless Whitgift sportsmen have gone on to international careers: Victor Moses, Marland Yarde, Danny Cipriani and Lawrence Okoye, to name just a few. The School has twice been voted 'Independent Sport School of the Year' by both The Daily Telegraph and School Sport Magazine.

The Daily Telegraph summed up the School's reputation: "*Whitgift School—one of the leaders of the pack thanks to big investment and top-level coaches.*"

Engaging the community

A particular highlight of Dr Barnett's tenure at Whitgift has been the opportunity to mastermind major presentations for the benefit of the School and the wider public. As Exhibition Director, he conceived and wrote the acclaimed Hidden Treasures from the Mary Rose exhibition in 2009, when hundreds of the finest artefacts, recovered from Henry VIII's flagship, were displayed. A new record for visitors to a Croydon exhibition, 35,000 people, was set. Time Out described Hidden Treasures as "*an impeccably mounted professional exhibition... one that any central London museum would be proud to host*". The First World War Centenary exhibition, *Remembering 1916 – Life on the Western Front*, opened its doors in March 2016. The Exhibition displays an outstanding range of rare and many previously unseen artefacts. Dr Barnett was also, for a decade, Match Director of the Whitgift Festival of county cricket, which brought top professional cricket side, Surrey CCC, to play T20, one-day and four-day first-class cricket at the School.

With his retirement due in 2017, and with many exciting events planned in the interim, Dr Barnett will certainly have a wealth of wonderful Whitgift memories. The distinguished Professor of Violin at the Royal Academy of Music recently wrote of Dr Barnett's school, "*Whitgift means so much more than just a great school; it is the bridge between dreams and reality.*"

15 years

of the
**Whitgift
Primary
Project**

"I would just like to take this opportunity to thank you and the

Primary Project for providing our children with an opportunity to explore learning at school.

The children had an amazing time and some are now even talking about university, which is a big step! It has opened some of the children's minds to what they can achieve, when they apply themselves. Helping to raise children's aspirations is something we value enormously.

LAURA WALLACE
CLASS TEACHER at
KINGSLEY PRIMARY
SCHOOL



Set up in 2000 through a partnership consisting of the Croydon Advertiser, Croydon Business and Education Partnership, the Primary Project is now funded and run entirely by Whitgift School. It gives primary schools from the Croydon area the chance to attend Whitgift for one week per year, to use the facilities around the school for ICT and a variety of other subjects. Approximately 1,000 children from over 30 primary schools visit Whitgift for the Primary Project every year. The Project runs during every full school week of the year and is fully integrated into the everyday routine at Whitgift.

During the week the children are taught subjects by Whitgift staff across the curriculum. In Computer Science, children are introduced to coding with Scratch software, website design, graphics work, animation, music composition, robotics and movie making. As part of their Science allocation, the pupils experience a hands-on Chemistry lesson using Bunsen burners. Pupils have two Language lessons, currently Mandarin Chinese and Japanese; the

children are introduced to the culture and geography and take part in games, role plays and singing. The pupils have a PE lesson with a specialist coach from a choice of a wide range of sports. In Music, pupils are introduced to Djembe drums and they play a copycat rhythm game. In addition to the curriculum work, pupils are given exposure to some of the exotic wildlife found at the School by undertaking drawing improvement sessions.

Through the Project, Whitgift aims to provide pupils from Croydon primary schools with the opportunity to experience a week of learning in a unique and inspiring environment. Pupils encounter a large secondary school environment for the first time, giving them an insight into life after primary school. Whitgift aims to keep abreast of advances in the curriculum, and the teaching resources available, to ensure that pupils are exposed to fresh and innovative concepts. Whitgift sees the potential in the visiting pupils and aims to inspire these pupils by showing them what they can achieve during their visit.



50 YEARS



TRINITY
SCHOOL

MARKED at SHIRLEY PARK for TRINITY



50 years ago, Trinity School relocated to Shirley Park from North End, Croydon to make way for the Whitgift Shopping Centre. The School had occupied the site at North End since 1931 having moved there after 73 years in Church Road, Pump Pail. To mark this 50 year milestone at Shirley Park, the School has been celebrating by bringing the School's alumni, including sports and music stars of the past and future, students, parents and staff together for a number of superb events.

Sir Clive Woodward and the Rugby World Cup Trophy Tour



An audience of over 500 alumni, pupils, parents and staff at Trinity were treated to an inspirational evening in the company of Sir Clive Woodward and the presence of the Webb Ellis Cup on 8 September 2014. With just days to go before the French team arrived at the School to start training for the Rugby World Cup 2015, Sir Clive Woodward formally opened Trinity's new Strength and Conditioning Centre, refurbished in preparation for the French Rugby Team. He then carried the Webb Ellis Cup into Trinity's packed Concert Hall and laid it on its plinth.

The Trinity Boys Choir gave a rousing rendition of the Rugby World Cup song, World in Union, which they also sang at the Welcome Ceremony for France. Sir Clive then spoke on 'The DNA of a Champion' in a talk that was both motivational and entertaining. The evening ended with a reception for our alumni enabling them to catch up with each other, many of whom had not seen each other for years. Those attending were delighted to be given the opportunity to be photographed with the Webb Ellis Cup.

Opening of the Time Capsule

On September 9th, the School opened a time capsule buried behind the Foundation Stone when Trinity moved to its present site in 1965. It was a pleasure to watch our youngest pupil, Joel Cuttle retrieve the contents of the 1965 time capsule which included a copy of The Times, coins and stamps from 1965, an old archive cine film and School photographs and reports. Joel then filled the 2015 capsule with items suggested by students such as a mobile phone, a School magazine, a Rugby World Cup 2015 ball, a video message from the Headmaster to his future counterpart in 2065 and a weekly lunch menu. The expectant audience included the then assistant to the architect who designed the new school building, the original quantity surveyor involved at the time and the widow of Oliver Berthoud, Headmaster 1952-1972, who were all present when the capsule was buried 50 years ago. Joel said, "Overall, I think that it was a huge and also unexpected honour to open this portal into the past and uncover the lives of the people who have gone before me. It was also incredible to meet some of those who experienced what I was about to do 50 years before, to preserve the present and unlock the

past. I was surprised at the quantity and nature of the items too, as many of them seemed to arouse humour."



50th Anniversary Music Dinner with Tony Britten

More than 200 alumni, parents and staff enjoyed a superb evening to celebrate 50 years of musical excellence at Shirley Park with a keynote speech from composer and conductor, and Trinity alumnus, Tony Britten. Before the meal, the Niu Quartet played beautifully whilst between the excellent courses of the meal, we were treated to performances from our national Chamber music champions and Trinity Steinway Scholar 2015. The music was then rounded off by the ever popular Trinity Big Band before Tony Britten delivered a fascinating after dinner speech which included reminiscences of his time as a pupil at Trinity from 1965 to 1973. He was an ideal guest as he attended the School when it moved to Shirley Park in 1965.

Richard Fowler, alumnus (who left in 1973), said, "Thanks for a brilliant evening. I was very pleasantly surprised to meet up with several people from my form who I have not seen for over 42 years (some of whom have changed ever so slightly!)"



50th Anniversary Sporting Dinner with Alec Stewart OBE



Trinity was fortunate to welcome International Cricketer, Alec Stewart OBE, who captained both England and Surrey, to its gala dinner celebrating 50 years of sporting excellence at Shirley Park. As England's most capped Test player of all times, Alec entertained over 200 alumni, parents and staff with an after-dinner speech full of humour and insight. He spoke glowingly of Trinity's sporting successes in the last 50 years and paid tribute to its greatest sportsmen and coaches, some of whom, such as Alex Codling and Phil Keith-Roach (rugby) and Ian Salisbury (cricket), were present. "There's nothing better than being involved in yet another successful Trinity event, the Sporting Dinner, and speaking to Sir Alec Stewart is certainly a highlight of my cricketing career." Sixth Form student, James Allen.

Celebrations set to Continue

The celebrations will continue until the end of 2015/16 and include a reunion of alumni in academia with a showcasing of Trinity's current top talent; a celebratory concert at Glyndebourne; an anniversary Founder's Day Supper organised by Trinity's alumni organisation, TMWA; a multi-sports tournament between alumni and current students, and a spectacular finale at the Trinity Proms, organised by the Trinity Parents' Association.

Bursary fund

One of the most important aspects of the School's anniversary celebrations was the founding of the Trinity Bursary Fund. The aim of the Fund is to create 50 new bursaries for pupils who would not otherwise be able to attend Trinity. £750,000 has been raised to date towards the School's five year target of £5 million.

If you are a former pupil or teacher, do get in touch with the Alumni Office as the School would love to welcome you back! For more information on our 50th anniversary events, please visit www.trinity-school.org/50-years





5,000 hours of community volunteering at Trinity

Trinity students notched up over 5000 hours of community volunteering last year with over 300 students volunteering their time and skills to assist organisations, either on Field Day or for a term on a weekly basis. The work covers environmental activities, working with primary school children and musical entertainment. The students' efforts make a real difference and gives them an insight into the challenges faced in the wider world.

Lower Sixth students do practical tasks at homes of clients of Neighbourhood Care Agencies—jobs that they find difficult to do themselves - and also spend time chatting with clients. Students also plan music sessions for children of Castle Hill Autism Spectrum Disorder Unit and teaching staff report that sessions are excellent with our students taking on board tips for even better success. In addition, students help with Trinity events aimed at primary schools, such as Science Morning, and volunteer in the community as part of their Duke of Edinburgh programmes.

The annual Trinity Community Christmas Party is a highlight in many local care homes' activity calendars and has over 100 student volunteers and many parent volunteers, who assist with transport and hamper distribution. Students sit at tables and chat to guests whilst providing refreshments, helping with bingo and students also provide the entertainment. A guest commented, *"The tea was delicious and the entertainment was great fun. We love chatting to the boys who attend to our every need and are a delight."*

105 is the age of Whitgift Care's oldest resident

1910

Leila was born, the second of seven children.

14

was the age Leila began to stay at home helping her mother look after the large family.

18

was the age Leila trained as a nurse at Wallasey, passing all her exams and becoming a staff nurse in Goole, Yorkshire.

1935

Leila and Stanley married on 24th August.

1936-41

Their three children were born: Linda, Richard and John.

1941-45

Leila and the family followed Stanley around the different RAF stations where he was a Flight Lieutenant during WW2.

1950s

The couple acquired a family car and later a caravan to enjoy the long summer holidays.



Whitgift Care's social and activities calendars are filled with parties, coffee mornings, fundraisers and, most importantly, birthday celebrations. Last December, one very special lady, Leila Day, celebrated an incredible milestone, her 105th birthday. Leila is now officially Whitgift Care's oldest resident, breaking the previous record of 104 years and two months. To celebrate, fellow Whitgift House residents, staff and family gathered together for a party like no other to mark her day. The Community Room was full of cheer and laughter as everyone enjoyed an afternoon of live music by the Cantilena Singers – an excellent ladies' choir, who performed a special rendition of Happy Birthday, which had the whole room singing! Leila received a very special birthday card from the Queen and an impressive birthday cake from Whitgift Care.

1985

Leila and Stanley celebrated their 60th wedding anniversary.

2008

Leila moved to Wilhelmina House, part of Whitgift Care.

2015

Leila celebrated her 105th birthday at Whitgift House with fellow residents and her family.

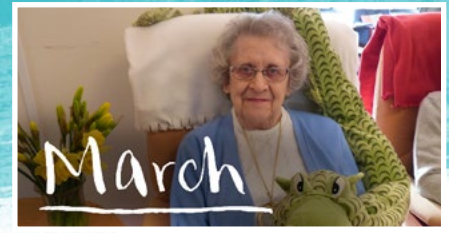
2015's activity calendar was also packed out with a host of imaginative, quirky and above all, enjoyable events



To mark the start of 2015, Wilhelmina House residents braved the cold to release more than 25 balloons in the home's leafy garden in Park Hill, Croydon.



Whitgift Almshouses residents raised a brilliant £250 for local charity Croydon Churches Floating Shelter by making a donation at every group lunch throughout Lent.



Beautiful yellow daffodils brought a snippet of spring to Wilhelmina House as residents celebrated St David's Day with a Welsh themed afternoon of games, music and memories.



At Whitgift House, the St George's Day story was re-enacted in the home's Community Room that had been transformed into a traditional English inn.



A fantastic concert and tea held by the NSPCC Croydon at Trinity was enjoyed by Whitgift Care raising a brilliant £540 for the charity with performances by the talented students.



The artistic talents of residents were showcased at the Heritage Exhibition held in the Whitgift Centre for the Croydon Heritage Festival. The residents' artwork competition was themed Yesterday, Today, Tomorrow.



Once again residents, families, staff and friends joined together for an enjoyable patriotic themed summer Garden Party at Whitgift House.



The Norwegian Campaign of WW2 was the topic of a talk at the Whitgift Almshouses by former soldier and resident, George Parsons, who took part in the mission 65 years ago.



The Whitgift Almshouses held another successful annual Garden Party themed 'Royalty for a day' to celebrate HM Queen Elizabeth II as the longest reigning monarch.



Wilhelmina House residents wore pink attire and took part in an entertaining morning of pink themed games for the annual Wear It Pink Day in aid of Breast Cancer Now.



Whitgift House raised funds for Croydon Churches Floating Shelter when they recreated their very own fundraising soup kitchen including 'dress down' fancy dress.



Father Christmas paid a special visit to the coffee mornings at Whitgift House and Wilhelmina House, whilst Whitgift Almshouses residents organised a Christmas market; all three homes raised funds for charity.



Old Palace of
John Whitgift School
Independent Girls' School

125th year birthday celebrations for Old Palace



Old Palace, an iconic Croydon landmark, boasts a truly unique and amazing history stretching back to the 9th Century; as a manor house, the summer Palace of the Archbishops of Canterbury and even a linen factory. In 1889, it was bought by the Duke of Newcastle and given to the Sisters of the Church who founded a girls' school. 125 years later, Old Palace of John Whitgift School prospers today offering an outstanding education to girls aged four to 18 years and with a thriving co-educational nursery. Head of Old Palace, Carol Jewell, reports on the School's milestone year:



A vibrant year of celebrations to mark the School's 125th birthday began with a production of the historic Old Palace Pageant. The lives of former visiting Archbishops, reigning monarchs, princes and even pirates were brought to life by the drama department in a theatrical production distinguished by scholarly research on the part of the history department led by Linda Baker. Alumnae present recalled the roles they had once played in this time-honoured event of former years.

Professor Dame Carol Black, Principal of Newnham College, Cambridge, addressed the whole School at Founders' Day on 29 September 2014. We remembered that the first teacher employed at Old Palace was a woman from Newnham who studied Maths; although, being a woman, she was not able to be awarded a degree! Her address was memorable, inviting highly aspirational thinking on the part of all students, some of whom then enjoyed lunch with our guests in the Emily Ayckbown Room, our Founders' Room.

The 125th birthday celebrations were distinctive in their unique appeal to all ages in the School's community. Our three year olds joined us for a whole school photograph on our magnificent greenfield site at the Preparatory School, Melville Avenue, and as the photograph was taken, choruses of happy birthday resounded, completely undeterred by the persistent drizzle.

Our birthday celebrations also reached out to families, friends and alumnae of Old Palace starting with a Service of Thanksgiving in Croydon Minster. It was my privilege as Head to give the address. I reminded the assembled gathering of the words of a young doctor, who in the 1890's, had done so much

to help the Sisters in establishing the School. His words continue to cause some stir and amusement, even today, with his comments: *"that's a brave band of ladies down there... but they will never make anything of it!"* After the service, everyone enjoyed lunch in the Banqueting Hall with tours round the school and many an exclamation on the part of our most senior alumnae at the wonderful new facilities which the current students now enjoy. Spartan conditions prevailed in the days of the Sisters of the Church and it was so very entertaining to meet Old Girls as they shared their stories.

Birthdays also promise the excitement of gifts and this is a wonderful opportunity for me to express my thanks for the lovely statue given to the School by our alumnae, the Old Palace Association (OPA). The statue of 'Victoria reading' sits comfortably in the Medieval Garden, perhaps keeping an eye on students strolling in the surroundings whilst simultaneously enjoying her book. My thanks also to the Friends of Old Palace for their generous gift of a handsome garden bench which sits rather grandly in the Medieval Garden and is already much enjoyed by staff and students alike!

Families, friends and alumnae entered into the spirit of the Christmas Banquet, a celebration of a Victorian Christmas in keeping with the founding of the School in 1889. Many guests attended, resplendent in Victorian costume, and we were treated to music and entertainment of the times. We heard from Dickens and enjoyed some Gilbert and Sullivan music first published in the year that Old Palace began.

In March 2015, we celebrated in music with a magnificent concert in Fairfield Halls for a capacity audience. All parts of the

School performed and there were so many highlights including: a String Orchestra performance of Vaughan Williams' Concerto Grosso featuring 60 string players from Year 3 to 13 and our quartet-in-residence, the Maggini Quartet; energetic and toe-tapping performances from our 40 steel pan players; captivating singing from the girls in the Preparatory School; dazzling instrumental work from a Year 9 flautist and Year 13 flautist, in Cimarosa's Double Flute Concerto. The evening culminated in a moving and polished performance of Faure's Requiem performed by senior and preparatory students and the senior orchestra. With over 200 performers, including a large number of Old Palace Alumnae in the orchestra, this was a real celebration for the whole community.

To round off our year of celebrations we held a giant Street Party in Old Palace Road. Residents of Old Palace Road and Howley Road were all invited in addition to all Old Palace families. Picnic tables filled the entire street and bunting and balloons filled the air. So many enjoyed picnicking and the rain stayed well away. A surprise visit by Cllr Patricia Hay-Justice, Mayor of Croydon, was just one highlight of the day. To see Old Palace Road empty of cars and full of people chatting was perhaps a reminder of the 1890s!

The vision of Mother Emily, one of the Founders' of Old Palace School, in the 1890s, despite the pessimism of some of those around her, has certainly been amply rewarded in the vibrant community of the School today.



A photograph of four young girls in school uniforms walking through a school hallway. They are smiling and holding books. The girl on the far left is holding a red book titled 'HARRY POTTER'. The girl next to her is holding a yellow and blue book titled 'Desserts'. The girl in the middle is holding a blue book titled 'GRANDMA'. The girl on the far right is holding a book with a colorful cover. They are all wearing dark green blazers and skirts. The hallway has large windows on the left side.

Old Palace charity & community outreach



This year, Old Palace students have shouldered responsibility in the community at both local level in Croydon and considerably further afield. 30 of our most senior students have committed to Saturday volunteering work at St Christopher's Hospice, working with terminally ill young people. Staff have presented a series of workshops and masterclasses to the broader public covering a range of topics from mathematics and science to classics, whilst students led Tudor Dance masterclasses in the Croydon Heritage Festival. In mathematics, Old Palace has led STEP classes for more than 12 schools.

At international level, Old Palace geographers, working with Livingstone Tanzania Trust, have donated £5,000 towards funding the construction of the school they will be working on in Tanzania 2017. At a more local level our Sixth Formers have collected for Croydon Floating Shelter and given time helping with the practicalities of running the scheme; setting up sleeping, catering and socialising arrangements for the guests in Croydon Minster Church Hall.

In Year 10, Maya and Amber were involved with the Wings of Hope Achievement Award (WOHAA). They raised over £300 for the charity by holding dance workshops for the local community and offering services such as face painting at local and school fairs.

They were invited to the national semi-finals at The House of Lords in the summer term where they received an honourable mention as they were the smallest and youngest team to participate. The pair were also invited to the Awards Ceremony in London and presented with certificates of participation. Meanwhile, Amber was invited to Cambridge University, organised by WOHAA, where she was hailed as an excellent ambassador for both WOHAA and Old Palace.

More recently Year 10 have been involved in fortnightly visits to Whitgift House, taking part in activities with the residents such as musical recitals and games. Year 9 collected jams for Christmas hampers with Croydon Commitment, in partnership with the Croydon

Neighbourhood Care Association, put together for elderly and frail people in Croydon. In November, Year 8 students visited Redcourt Care Nursing Home where they chatted to the residents and interviewed them about their memories of Croydon. Finally, Years 6 & 7 have worked hard for the Toy Collection at Croydon Toy Library in conjunction with Specsavers, collecting old spectacles for Vision Aid Overseas Africa as well as toiletries for the Salvation Army's project 'The Wells'.



2020 is the year set for completion of the Whitgift Centre redevelopment

The past century has seen the Foundation play a crucial part in shaping the economic fabric of Croydon due to its land ownership in the heart of the town centre; the area of land in between Wellesley Road and North End, and Poplar Walk and George Street. This area was originally occupied by Whitgift Grammar School before it moved to Haling Park in 1931, and latterly Whitgift Middle School, re-named Trinity School of John Whitgift in 1954. In the 1960s, with Croydon set to become South London's economic powerhouse and shopping mecca, Trinity moved to its current site at Shirley Park and was replaced by one of the largest shopping centres in the UK at that time, the Whitgift Centre. As the freehold owner, the Whitgift Centre is the charity's major asset, enabling it to grant one of the largest bursary support schemes in the country totalling in excess of £5million a year. Over the past ten years, the Foundation has provided more than £40million to enable thousands of children and young people to benefit from an outstanding education at one of its three schools, creating life-changing opportunities.

This decade has presented Croydon and the Foundation with an unprecedented opportunity to restore the town back to its former glory through the £1billion redevelopment of the Whitgift Centre. Set for completion in 2020, Chief Executive, Martin Corney, provides an update on the scheme:

What have been the key milestones of the project?

In November 2011, Westfield and the Foundation entered into exclusive arrangements to work together to explore the potential redevelopment of the town centre. In February 2013, the Croydon Partnership was formed when Westfield entered into a joint venture with Hammerson PLC to combine Croydon's two main shopping centres, the Whitgift Centre and Centrale, and deliver a comprehensive and transformational change to Croydon. Croydon Council granted planning permission to the Croydon Partnership for the redevelopment on 25 November 2013. Following this decision, the Mayor of London, Boris Johnson, gave his approval to the plans.

What progress was made in 2015?

In September 2015, the Government confirmed the Compulsory Purchase Order (CPO) which enabled Croydon Council to use its powers to purchase land needed for the £1billion redevelopment of the Whitgift Shopping Centre.

What are the next steps for the redevelopment?

2016 will see the scheme progress with detailed planning proposals submitted to Croydon Council. It is anticipated that the construction work will start in 2017. The following three years will see the Whitgift Centre close so that the works can continue more efficiently.

How will the redevelopment impact on the Foundation's future income?

During the development phase, the Foundation's income is protected and any growth in the future will enable us to increase our provision for more bursaries and support our wide range of care services. We are also seeking other opportunities to expand our education and care services through fundraising and development.

What benefits will the new shopping centre bring to Croydon in 2020?

The scheme consists of 200,000 sq m including retail, leisure, residential with the potential for hotels and offices and will create over 5,000 new jobs and thousands of temporary construction employment opportunities. The scheme has acted as a catalyst for other development projects across the town and there has already been a vast change to Croydon's landscape, particularly around East Croydon Station with the construction of residential and office units well underway.





“We have made a significant investment into our project in Croydon and remain committed to a start on site as soon as practicably possible, which we have long maintained will be in 2017. We expect to have completed the final designs and land assembly by the end of the current year, with a targeted opening in 2020.”

—
CROYDON PARTNERSHIP SPOKESPERSON





15,000
VISITORS TO
CROYDON
HERITAGE
FESTIVAL



As Croydon's only community-based festival dedicated to celebrating Croydon's rich history, heritage and culture at an exciting time in Croydon's redevelopment, Croydon Heritage Festival continues to go from strength to strength and 2015's event was no exception.

The first ever Croydon Heritage Festival, organised by The Whitgift Foundation, was held in 2013 to celebrate the town's rich and vibrant history and heritage with more than 150 events taking place across the London Borough of Croydon. During the ongoing regeneration of Croydon, the Foundation felt it was important to maintain knowledge and understanding of its incredible history and of the places, people and events that have shaped the character of the town. With each successive year being a huge success, the festival continues to grow thanks to the support of organisations taking part and the increasing number of visitors attending events, not to mention the support of the 2015 sponsors, the Croydon Partnership, Handelsbanken, Mott MacDonald and Stiles Harold Williams.

New for 2015, the Croydon Heritage Festival was themed 'Famous Croydon' and celebrated Croydon's links to famous people and events of the past, present and future —bringing together the community, young and old. From touring behind the scenes of Croydon's famous buildings, hearing tales of the Flower Fairies, to street dance, art and

music, the festival saw 15,000 visitors attend more than 70 events between Saturday 20 June and Sunday 28 June 2015. The event guide attracted interest from all corners of the Borough and appealed to all ages with three-quarters of the events being fully booked.

Working with the older generation to uncover fascinating local stories from the past, the festival explored Croydon's heritage links to famous people and events from years gone by and was celebrated on Saturday 20 June, when the town centre came to life for Croydon Heritage Day. The day saw an eclectic mix of live street and stage performances by 14 dance, drama, choral and theatrical groups whilst 30 local organisations ran stalls. Overall, footfall in North End increased by 10,000 people from the previous week (Source: Croydon BID).

To mark the famous Croydon of today, a newly launched walking trail invited people to visit local landmarks and famous spots, following a specially produced map to help them find their way. Many of the town's iconic buildings, both old and new, were

open to the public for guided tours. 200 people visited Croydon Airport (doubling the visitor numbers from the previous year), 160 guests were welcomed into the Whitgift Almshouses and the Tramlink depot tours sold out in the first few days of the programme going live.

To find out what would be famous in Croydon's future, the festival invited the town's children and young people to reveal their artistic talents and illustrate how they envisaged their town would look in 10, 100 or 1000 year's time. The winning entries by students from Fairchildes Academy were exhibited in the Heritage Exhibition held in the Whitgift Centre for the duration of the festival and the whole class won a behind-the-scenes tour of the London Tramlink Depot.

Croydon Heritage Festival was a fantastic success involving yet more of the community, driving more visitors and businesses to the town and changing perceptions of Croydon as a whole.

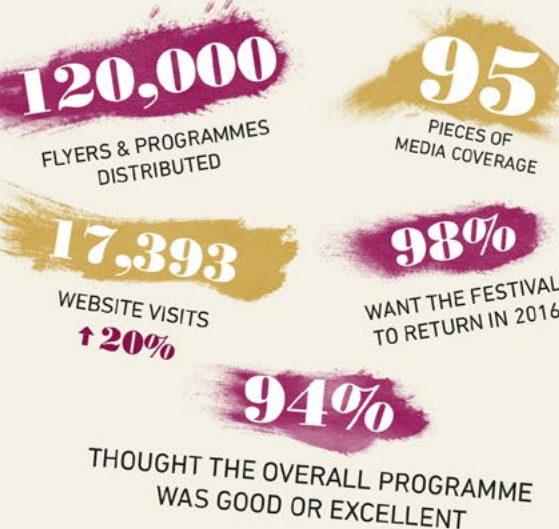
Feedback

Lovely tour of the Almshouses—very informative and lovely to touch the artefacts.

“Surprised by the magnificent Town Hall.”

It worked well because the organisers had managed to recruit and reflect within the programme the demographic diversity of the borough, past, present and future, and to have this illustrated in the programme.

Stats & Facts



Featured in



25,000

enquiries to the Carers Support Centre

After only two years of opening, the Carers Support Centre received a record 25,295 enquiries from carers and professionals in 2015. Located at 24 George Street, the Centre is a one-stop shop offering information, advice, support, training and activities. The feedback received has been overwhelmingly positive thanks to the work of the Carers' Information Service who run the facility. Set up in 1997 by the Foundation, the Service now comprises a team of eight staff who run the Centre supported by 20 volunteers. Helen Thompson, Manager, takes time out from her busy schedule to report on 'a day in the life' of her team:

Our day begins with a team meeting. We talk about our newly rebranded publications, the implications of funding changes in the Borough and update each other on our work. We only have an hour before the Carers Support Centre is open to the public when room hirers and visitors will be arriving. A separate meeting with the Advice Workers focuses on the complexity of cases, resulting in us taking on more difficult casework. We discuss training needs, referral processes and debrief some of our more challenging cases.

Our Advice Workers, Beth and Kym, staff the drop-in service on the ground floor of the Centre. Enquiries can range from aids and adaptations, specific conditions and finances to transport, respite and employment. There is often a queue of carers waiting to talk to them about their situation and, in just a short period of time, they've spoken to a carer who has been scammed by a rogue trader, another who wants to find out whether she can get her father assessed for dementia and a mother of a disabled child who desperately needs some respite. Together, they respond to these requests with calmness and warmth, ensuring that each person goes away feeling that they have been listened to and supported. Many will be referred to one of our specialist advice surgeries that we hold throughout the month, covering debt, benefits, housing, employment, legal issues, mental health and special educational needs.



Upstairs in the Carers' Information Service office, the phones ring throughout the day. Advice Worker, Ann, talks to a carer whose husband is about to be discharged from hospital; she's worried about how she will manage as she is also in poor health. After talking through the carer's concerns, Ann liaises with a number of statutory agencies on her behalf, before calling back to reassure her that support will be put in place. Later, Ann will undertake a carer's assessment to discover that a carer is not receiving all of the benefits she is entitled to and that once these have been applied for, the carer will be over £100 per week better off. The carer is delighted and feels better for having been able to talk through her caring situation with someone else.



Meanwhile, Angela, our Advice Services Co-ordinator, talks to another carer who has a complex care package to help care for her mother; a meeting is arranged so they can go through it in detail. Many of the calls are for help with complaints and direct payments issues.

Our Admin and Facilities Officer, Alison, is busy ordering envelopes and labels for our forthcoming *Carers News* mail out undertaken by volunteers. Along with overseeing a variety of facilities tasks, she begins processing forms awaiting entry onto our database of 5,000 carers. They have chosen to go onto the Carers Register and become members of the Centre where they will receive a membership card offering local discounts and enabling them to identify themselves as carers. Our recently joined Bookings Administrator, Victoria, is equally busy overseeing the Centre's room hire service which offers organisations meeting space and provides much needed income to fund the Centre.

Throughout the day, Victoria will prepare rooms, meet with potential new users and look at ways to promote our facilities. She takes time out to join the Craft and Chatter group in the Carers Café, to get a feel for some of the activities we provide (and tackle her cross-stitch).

Downstairs, Ruth, our Volunteer and Training Co-ordinator, is meeting with a volunteer who is here to staff the Carers Café, open every morning. He will be making refreshments and talking to the Café's visitors, some of whom are taking time out from their busy lives. As a carer for his wife, he knows just how important this time is for people and is happy to chat or sit alongside someone quietly. Ruth then meets with one of our regular trainers who is running a session about the impact of caring on relationships to check the plan of the day. Our monthly e-bulletin, *What's New for Carers?* has been circulated, so Ruth responds to requests for places at the many activities she organises, such as training and information sessions, massage, lunches, dancing and singing and book club to name a few. She then sets about organising a social event for the volunteers, an important way of rewarding their support, and later meets with an IT Buddy, who gives up their time to help carers with any of their computer questions.

Everyday flies by but amidst the hard work there is always time for tea and some humour, sharing of stories and mutual support when needed. This account gives just a glimpse of the dedication of the staff and volunteers that I am proud to work with and the part they play in making a difference to the carers who contact us.

THE WHITGIFT FOUNDATION

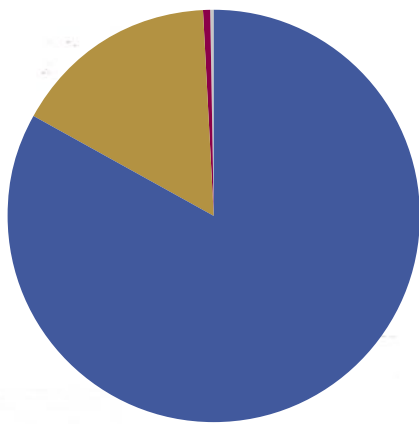
FACTS AND FIGURES

We are a charity – only the young, older people and carers in Croydon profit from the rental income we receive from our property and investment portfolio.

All of the income from our investment properties around the town is used for our charitable objectives of providing education and care in Croydon. This was the mission of our Founder, Archbishop John Whitgift, which is just as important today as it was in 1596 when he founded the charity.

We are a non-political organisation.

There are 17 Governors who oversee the running of the Foundation drawn from a wealth of professional expertise. They meet together to discuss key decisions at quarterly 'Court Meetings'. Specific responsibilities are delegated to 10 committees (such as Finance, Governance and External Relations) that meet three times a year. All conflicts of interest are identified in advance of every committee meeting and those Governors are excluded from discussions.



Income

School fees and care	£55,788,654	83.1%
Investment income	£10,790,283	16.1%
Other	£407,521	0.6%
Trading subsidiary	£124,765	0.2%
Total	£67,111,223	100%

We are passionate about Croydon's future.

We are one of the only wholly committed long term investors in Croydon town centre and we believe the Croydon Partnership has the ability to deliver an exciting retail and leisure offering in the heart of the town. In doing this, as it did in originally developing the Whitgift Centre in the 1960s, the Foundation is once again proving its long-term commitment to the town.

We work with groups in the community to improve our town.

We are part of the Develop Croydon Forum, Croydon BID Board and engage in regular dialogue with Croydon Council to ensure the town centre maximises its potential; the Croydon Commitment Steering Group to ensure that CSR funds are directed to worthy causes and the Old Town Masterplanning board to support in the improvement of this area.

We aim to be open and transparent and welcome dialogue with the local community.

In the past few years we have focused on how we present ourselves in the community. From organising the Croydon Heritage Festival, giving presentations to stakeholders around the town, to revamping our website and being active on social media, we welcome groups and individuals to get in touch and find out more about our work.

Sign up to our monthly e-news at whitgiftfoundation.co.uk

We actively look at ways to support other local schools and young people.

Our schools continuously develop and deliver innovative initiatives to support the local community. Each year the schools welcome thousands of local students to take part in lessons and special events or to use facilities across the curriculum, from sport to the performing arts.

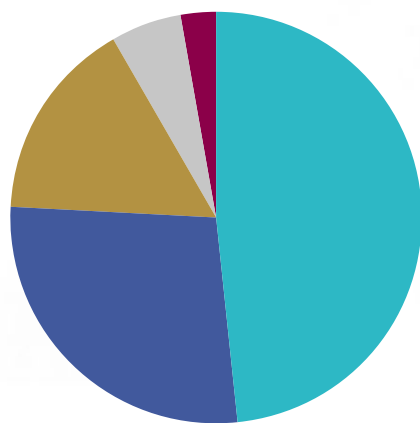
We think Croydon's heritage should be celebrated by all in the Borough.

Croydon's rich heritage is integral to perceptions of the town to residents and non-residents alike. We will be delivering the fourth Croydon Heritage Festival in 2016 to explore 'Undiscovered Croydon – past, present and future' from 18 to 26 June. Through the Croydon Heritage Festival we have worked with hundreds of organisations and groups to raise awareness of Croydon's rich and fascinating heritage to improve perceptions of the town.

Find out more at croydonheritagefestival.co.uk

We are one of the largest employers in Croydon.

There are more than 1,000 staff employed in a vast range of education and care jobs across the Foundation.



Expenditure

Wages	£31,999,188	48.4%
Other operating costs	£18,293,934	27.7%
Bursaries, grants and allowances	£10,356,116	15.6%
Investment Expenses	£3,779,004	5.7%
Depreciation	£1,704,271	2.6%
Total	£66,132,513	100%

We are committed to looking at ways to support vulnerable people in the local community.

We have expanded our carer services in the past few years to reach out to more people who look after someone due to a disability, illness or old age. The Carers Support Centre opened in October 2013 and has seen an increase in enquiries from 16,000 in 2013, to 25,000 in 2015. We are also extending our care provision for older people by doubling the number of residents we look after at Whitgift Care offering 100 additional places for day care visitors in 2016. Whitgift Care also raises thousands of pounds for charitable causes each year.

We grant one of the largest school fee assistance schemes in the UK.

We are proud to offer one of the largest bursary and scholarship funds in the UK. 44% of our students currently receive financial support with school fees equating to £5 million a year. Our aim is to increase this figure through development and fundraising.


Until next year

The Whitgift Foundation
North End, Croydon, CR9 1SS

Telephone
020 8680 8499

Email
enquiries@whitgiftfoundation.co.uk

Website
www.whitgiftfoundation.co.uk

 [@1596Whitgift](https://twitter.com/1596Whitgift)

 [John Whitgift](https://www.facebook.com/JohnWhitgift)

Registered Charity Number: 312612



THE
WHITGIFT
FOUNDATION